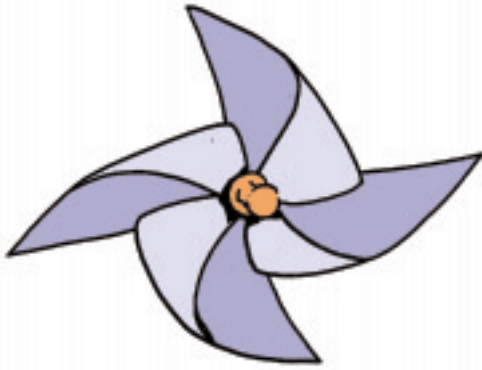
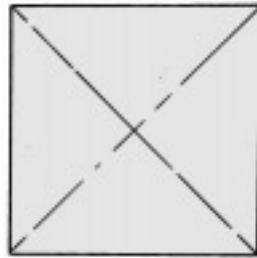


Pinwheel Instructions

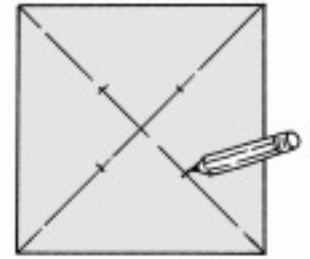
March is a great time to make pinwheels. Pinwheels are easy to make. As long as you begin with a square, the size of your pinwheel is up to you. If you decide to make a big pinwheel, be sure your dowel is longer.



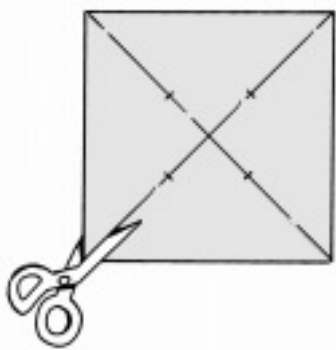
1. Begin with a square of paper.



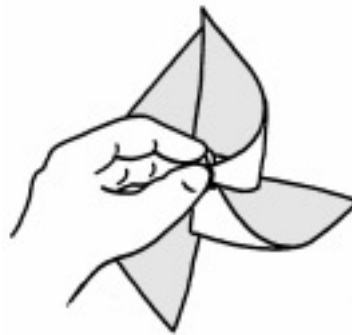
2. Fold your square, corner to corner, then unfold.



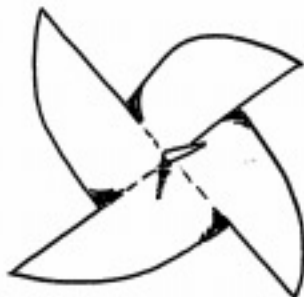
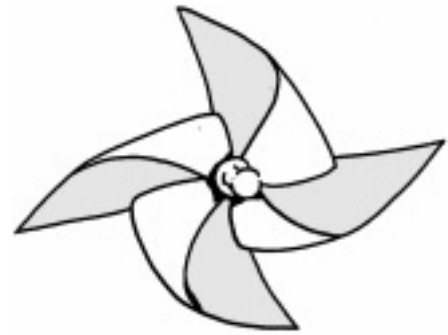
3. Make a pencil mark about 1/3 of the way from center.



4. Cut along fold lines. Stop at your pencil mark.



5. Bring every other point into the center and stick a pin through all four points.



6. Turn your pinwheel over - make sure the pin pokes through in the exact center.

7. Roll the pin around in little circles to enlarge the hole a little. This guarantees your pinwheel will spin freely

8. Stick the pin into a thin dowel.

Hint:
Separate your pinwheel from the dowel with two or three beads. Stick the pin through the beads first then - into the dowel.

